



Freight & Logistics Council

Owen Thomas
Executive Director of Infrastructure
Planning & Land Services
31 August 2017



METRONET Stage 1 Projects



Phase 1 Projects

Thornlie Line Extension

Yanchep Rail Extension

Morley-Ellenbrook Rail Extension

Byford Rail Extension

Midland Line Rail Extension

New Midland Station

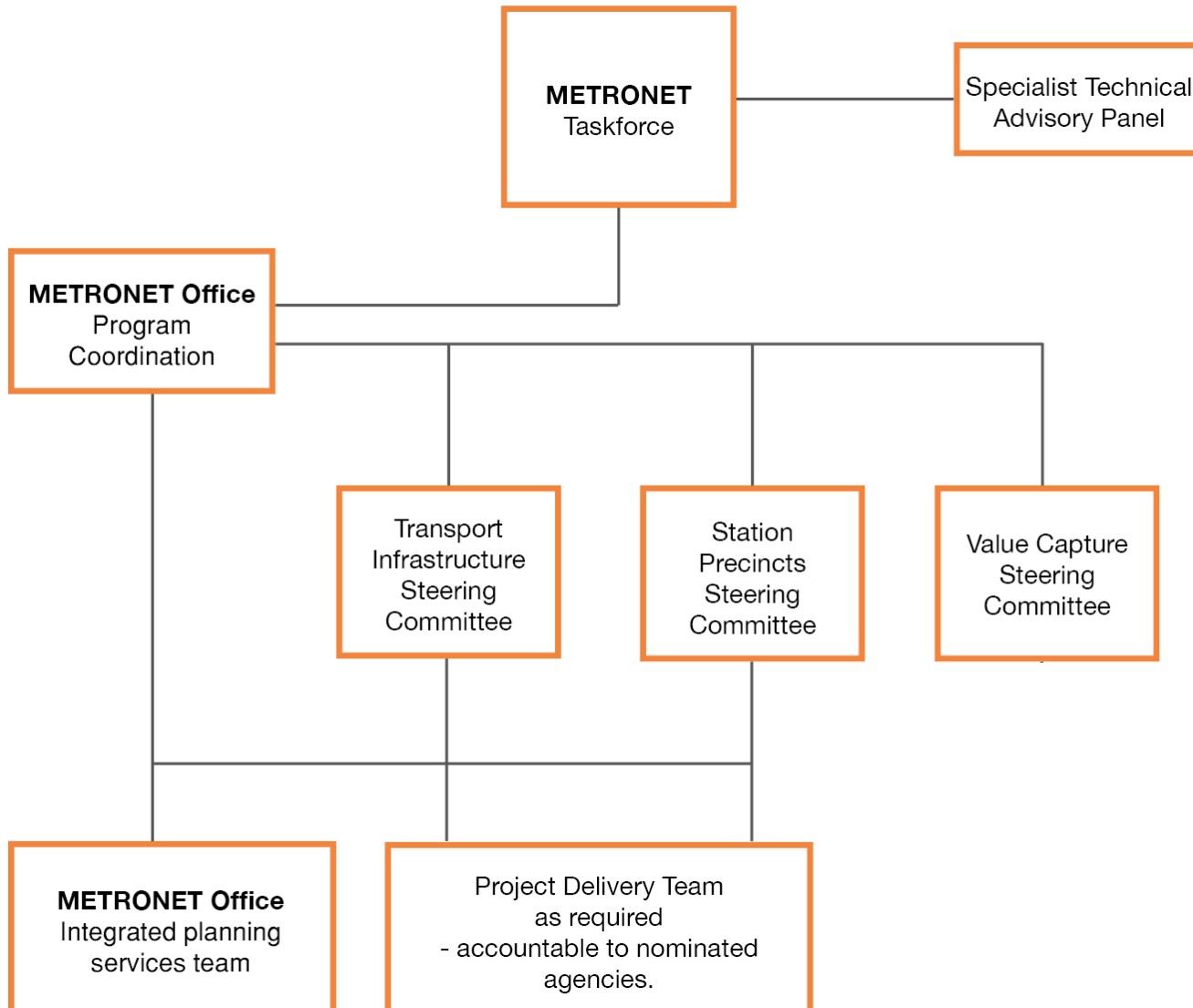
Karnup Station

Level crossing removal project

Rail car procurement



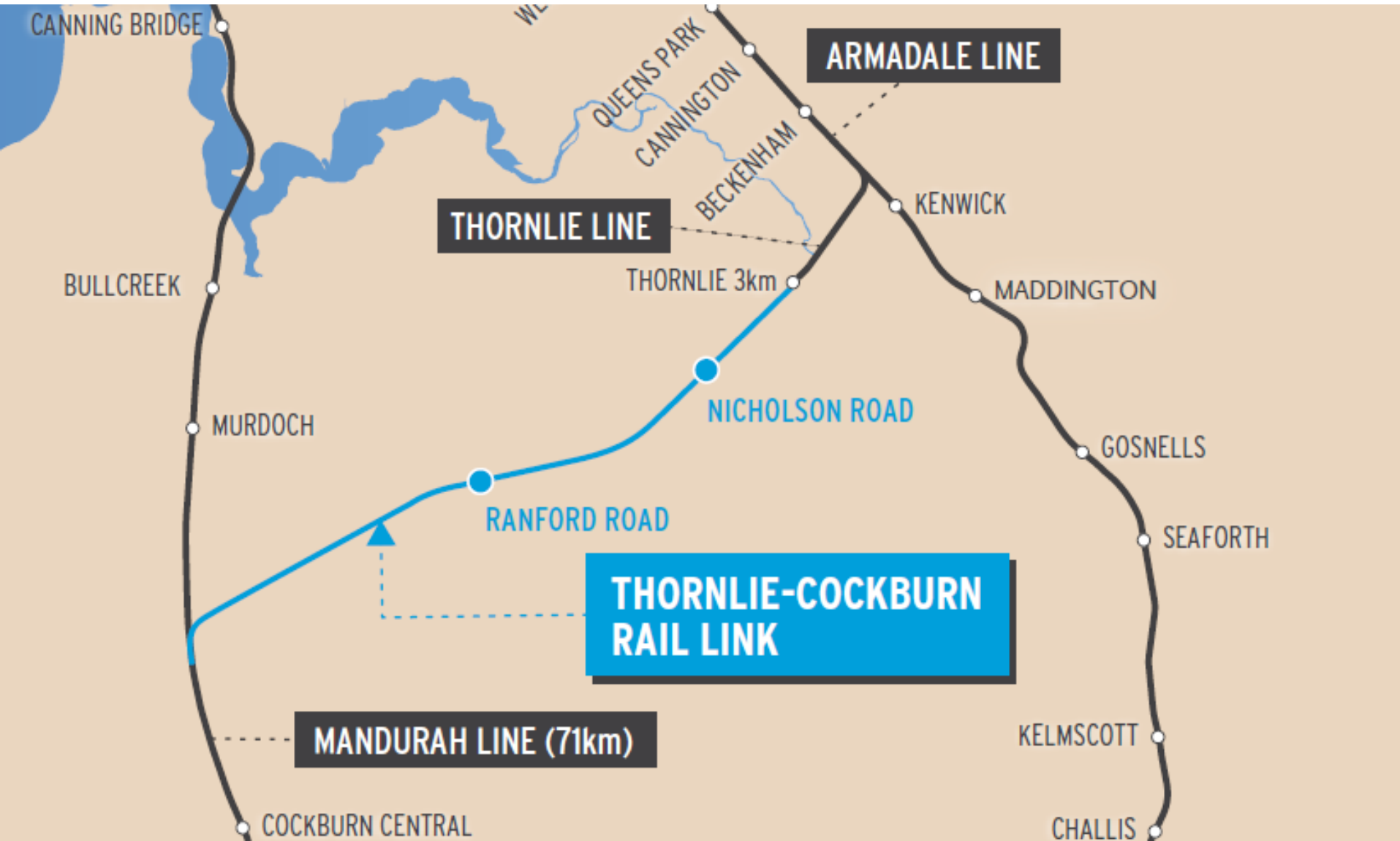
METRONET Governance





**STAGE 1 PRIORITY
PROJECTS:
FREIGHT RAIL INTERFACE**

Thornlie Line Extension



Thornlie Line Extension

Project features	<ul style="list-style-type: none">• Relocation of two existing freight lines.• Approx. 17.5km of new dual track; two new stations at Nicholson Rd and Ranford Rd and modifications to Thornlie and Cockburn Central stations.
Current status	<ul style="list-style-type: none">• Transport Business Case Cabinet endorsed and initial submission to Infrastructure Australia.• Project Definition Plan (PDP) works underway.
Proposed timing	<ul style="list-style-type: none">• PDP phase: now – early 2018.• Reference Design /Tender Phase: 2018 – 2019.• Construction Phase: 2019 – 2021.

Thornlie Line Extension

Freight interface considerations

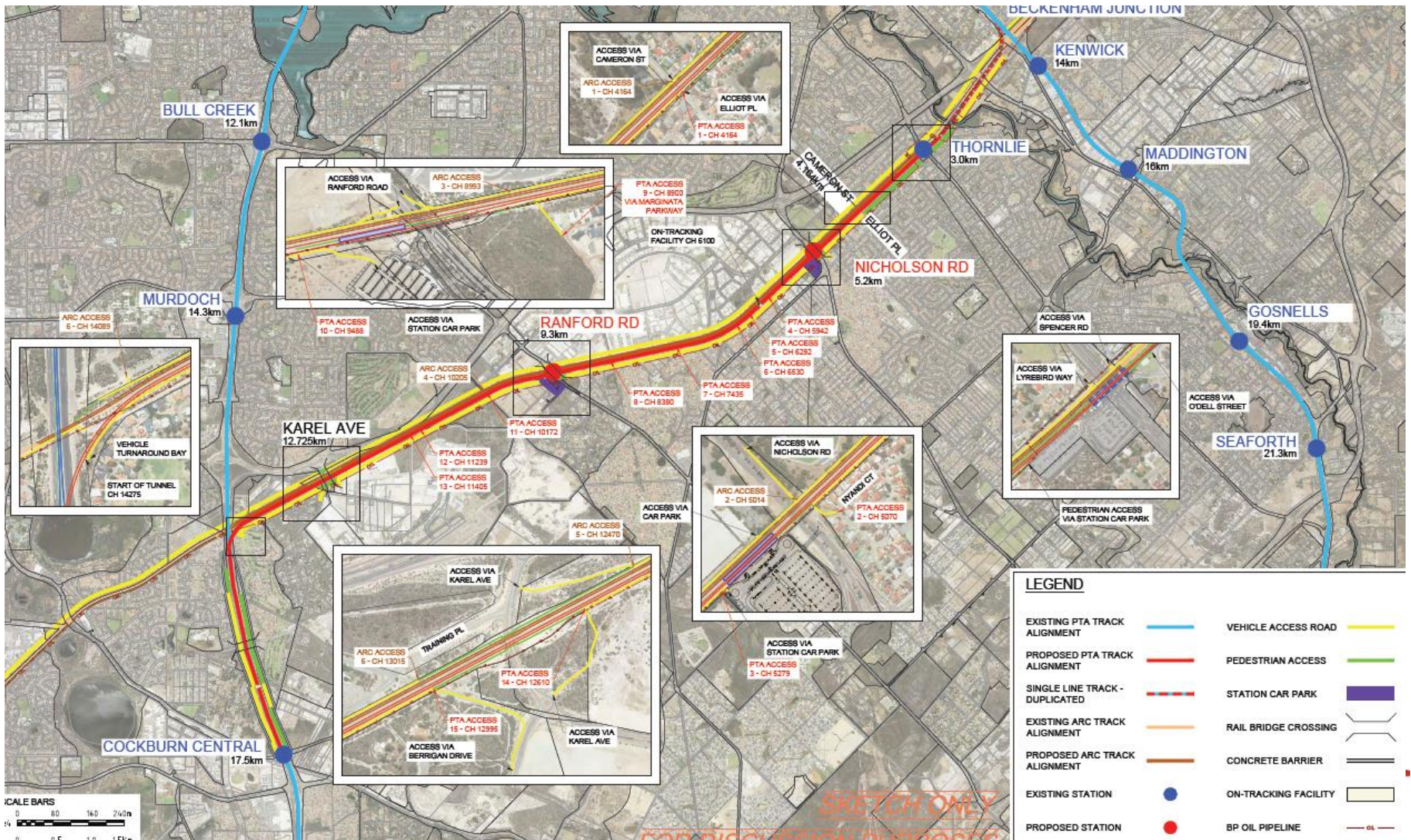
- Shared corridor for freight & passenger services.
- Collaborative approach with Arc Infrastructure to minimise disruption and develop shared access.
- BP's Kewdale White Oil pipeline runs through rail corridor.
- Working with BP on options to relocate or protect the pipeline.

Thornlie Line Extension

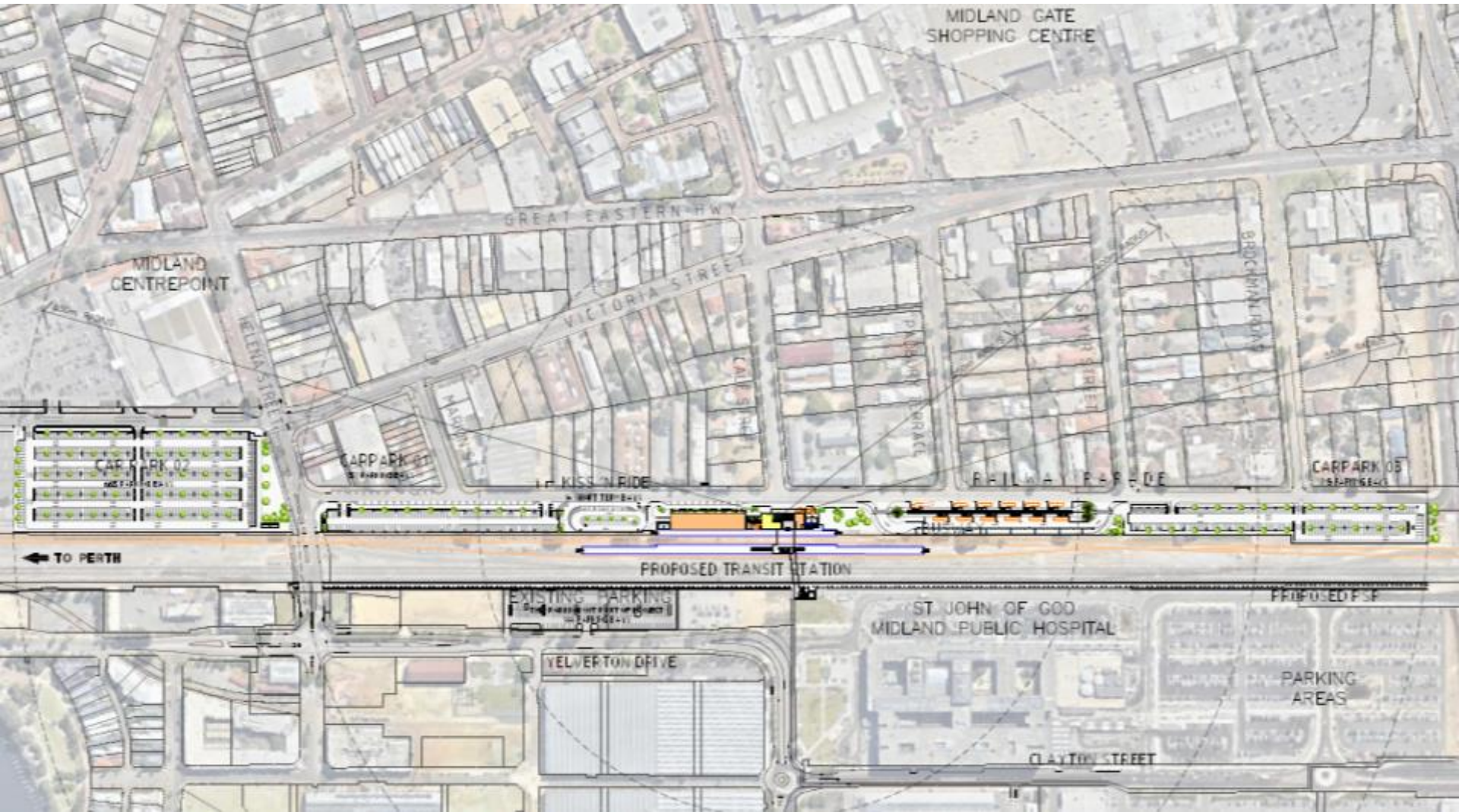
Freight interface considerations continued

- Liaising with regulators on appropriate noise and vibration criteria for freight railway.
- Undertaking noise and vibration assessment of future passenger and freight railways.
- Identifying potential mitigation measures for passenger and freight noise and vibration.

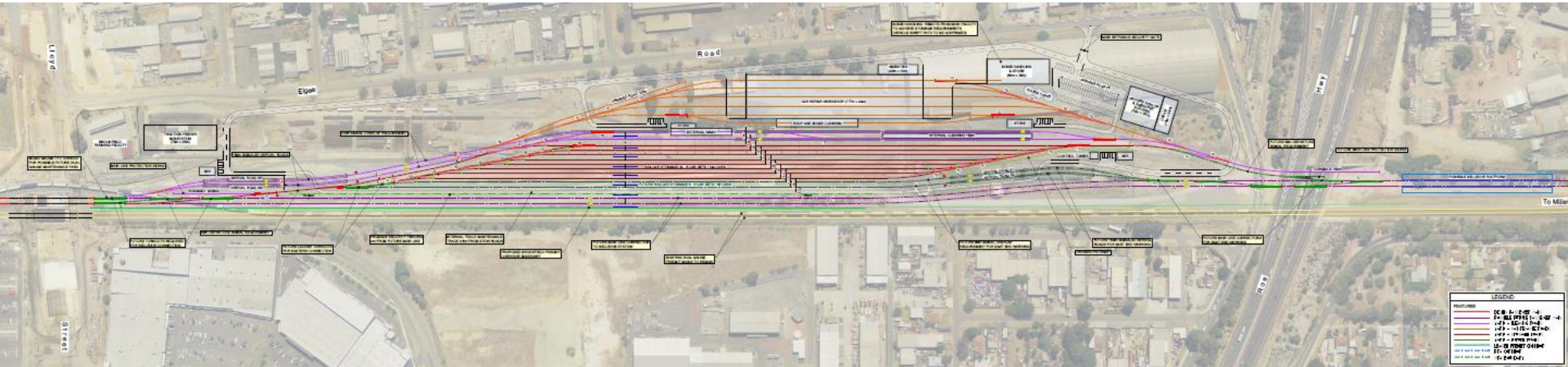
Thornlie Line Extension



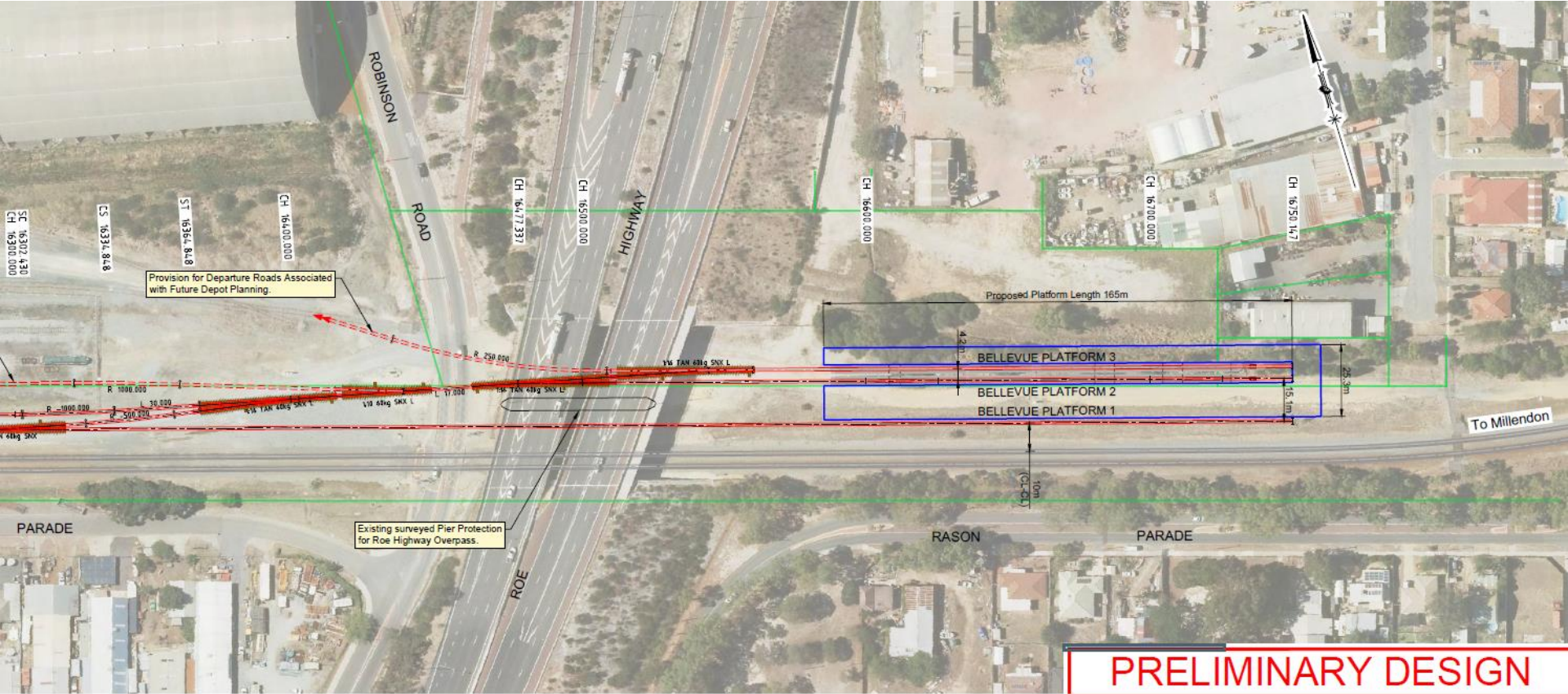
New Midland Station and Midland Line Extension



Bellevue Station (Indicative)



Bellevue Station (Indicative)



New Midland Station and Midland Line Extension

Project features	<ul style="list-style-type: none">• Relocate Midland Station to Cale St (three active rail platform faces, 12 bus stands and 6 bus layovers).• Land use and engineering planning development for Midland Line Extension (nominally to Bellevue).
Current status	<ul style="list-style-type: none">• High level alignment planning undertaken.
Proposed timing	<ul style="list-style-type: none">• New Midland Station Business Case and PDP: Jan 2018.• Midland Line Extension Business Case: 2019.

Midland Line Extension

Freight interface considerations

- Agreement with Arc Infrastructure.
- Contamination investigations are underway.
- Undertaking noise and vibration assessment of future passenger railway, comparing against current freight emissions.
- Identifying potential mitigation measures for passenger and freight noise and vibration.

Midland Line Extension

Level Crossings in Midland & Bellevue

- Project interfaces with two existing level crossings at Helena Street and Robinson Road.
- The Office of the National Rail Safety Regulator expects to see the removal of existing railway crossings as part of capital improvement works.
- Proposed depot and increase in train frequencies will result in increase in delays for vehicular traffic.

Midland Line Extension

- Project requires liaison with the Metropolitan Redevelopment Authority (MRA).
- New Midland Station is located within the MRA's Midland Redevelopment Area and will require the Station's development application to be assessed and approved by the MRA.

Midland Line Extension

A new replacement Freight Facility is planned to be constructed in the City of Gosnells.

Construction is planned to start in early 2018 with delivery by late 2019.



Midland Line Extension

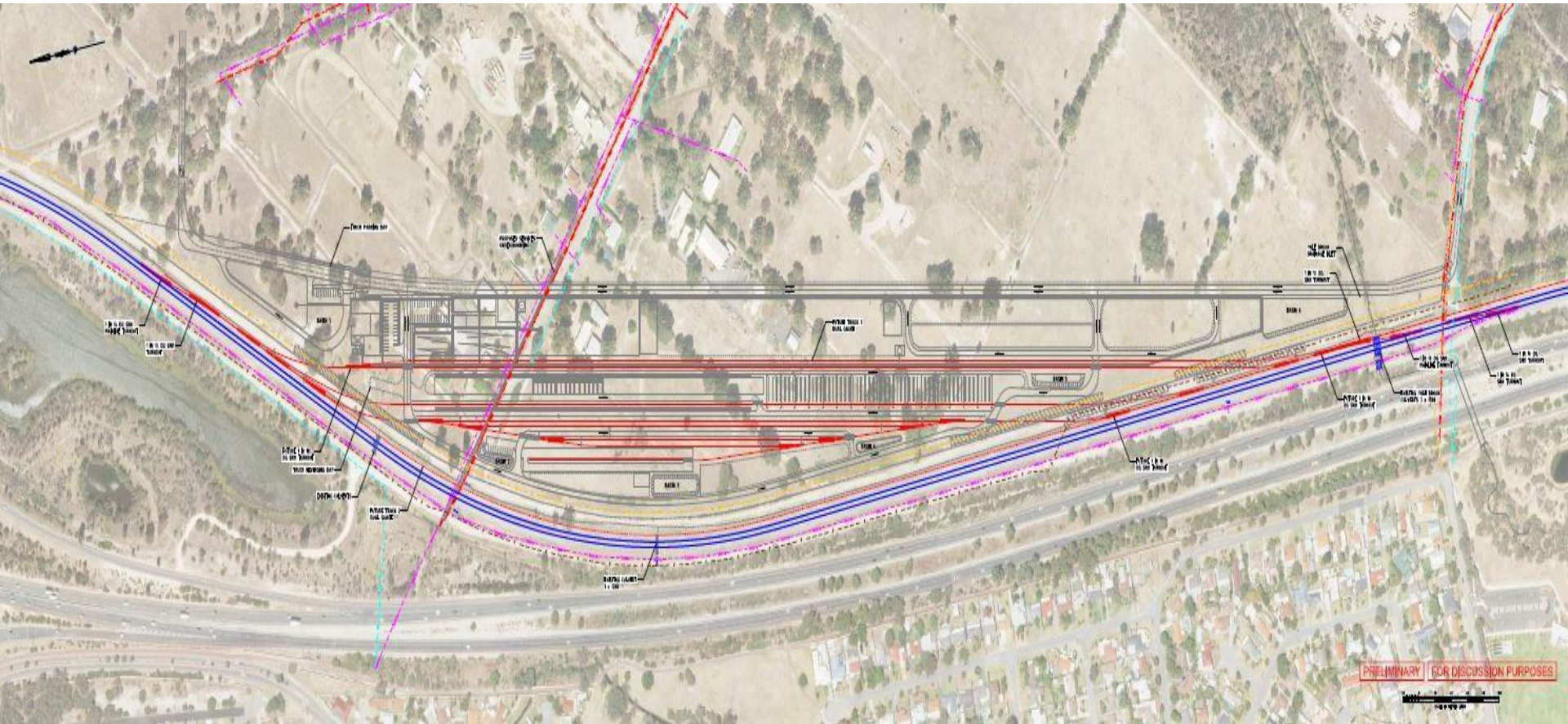
Kenwick Freight Facility

The proposed consist of the following:

- Flash butt welding facility
- Wagon maintenance facility
- Rail-grinding depot
- Material laydown area

Midland Line Extension

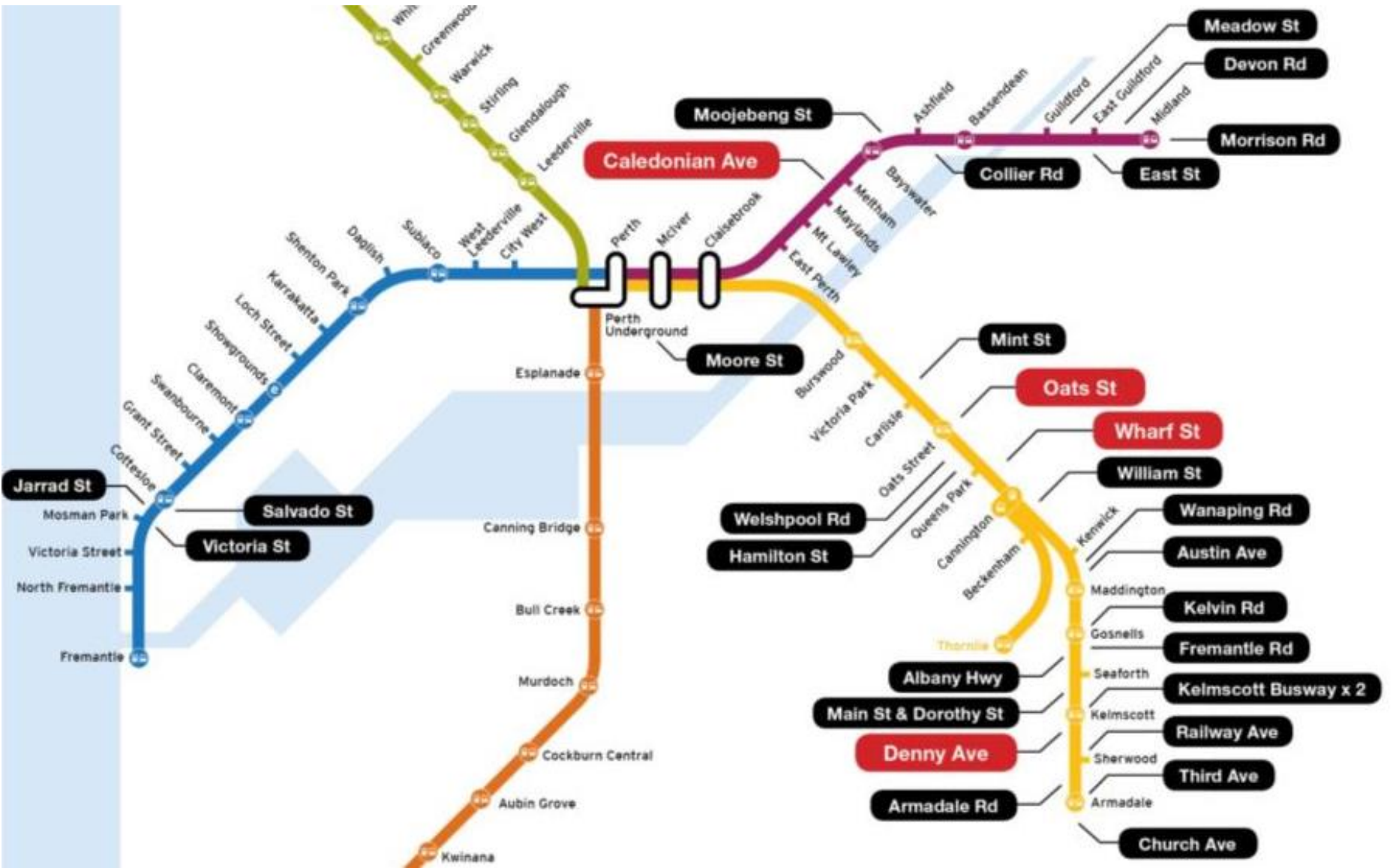
Kenwick Freight Facility



Forrestfield Station



Level crossing removal





QUESTIONS AND THANK YOU

 **METRONET**