

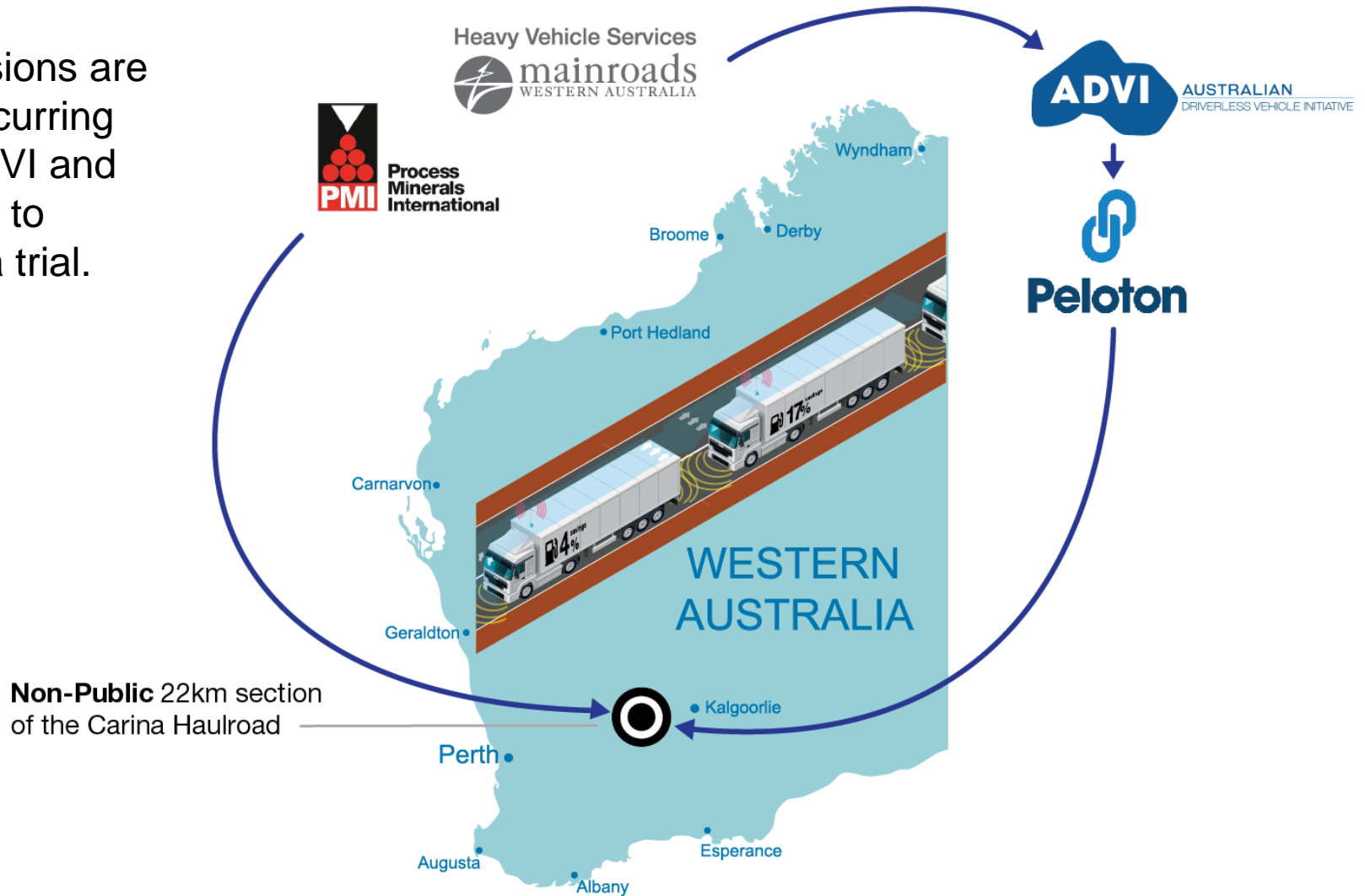


mainroads
WESTERN AUSTRALIA

Freight and Logistics Council of Western Australia Thursday, 27 October 2016

Heavy Vehicle Platooning :

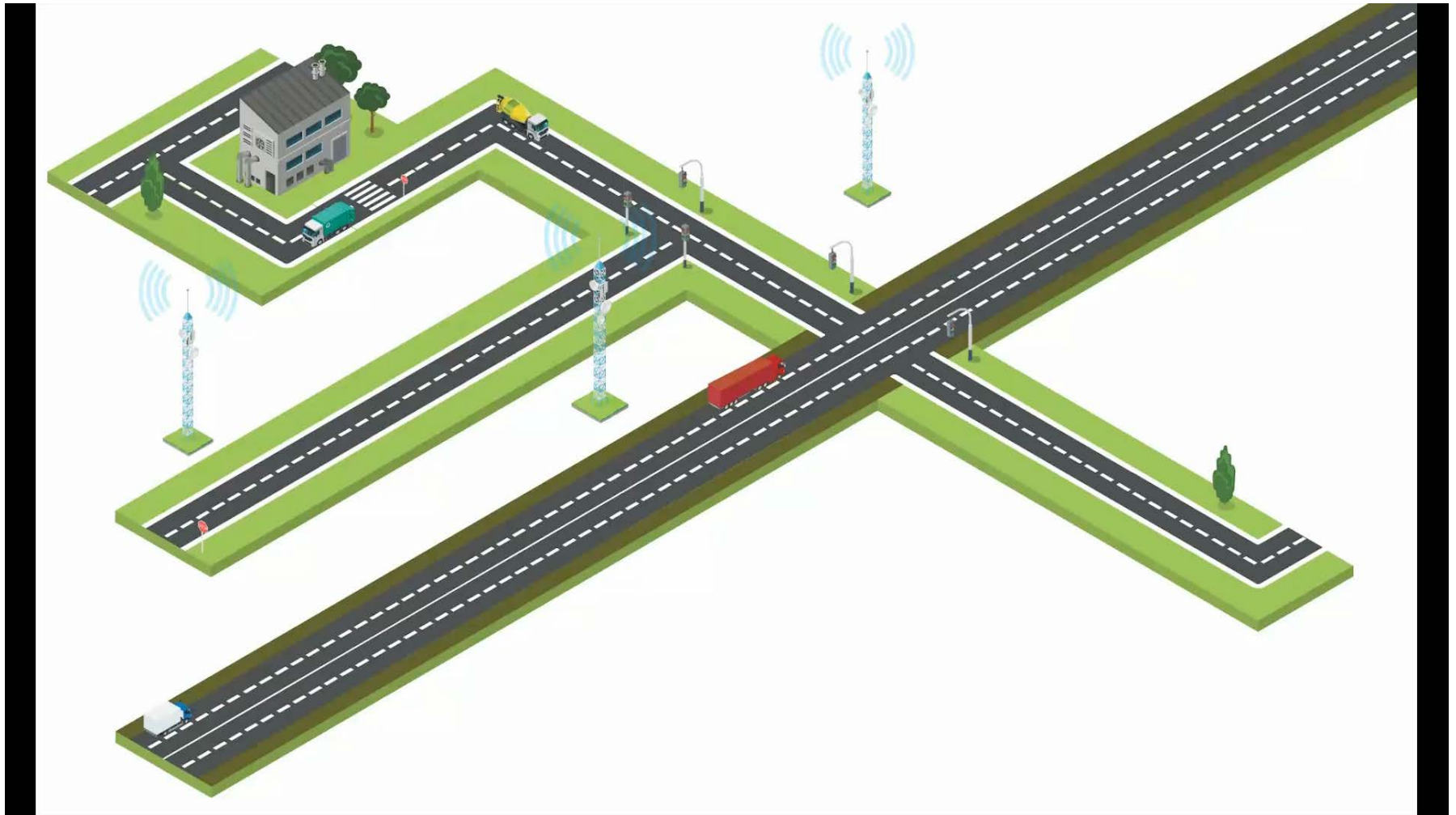
Discussions are now occurring with ADVI and Peloton to scope a trial.



27 October 2016



Kwinana Trials



Paddock to Bin Access Arrangements

For the harvest season, between 1 October and 28 February, operators may use roads that have not been assessed by Main Roads for RAV access, provided:

- Operators are registered under the Harvest Mass Management Scheme (HMMS);
- The road/s are being used to transport grain from a paddock to a grain receiver or return;
- The road/s are the most direct route from the paddock to the nearest road approved for RAV access; and
- The operator/driver complies with all conditions outlined in the HMMS Business Rules

Paddock to Bin Access Arrangements

Key requirements include:

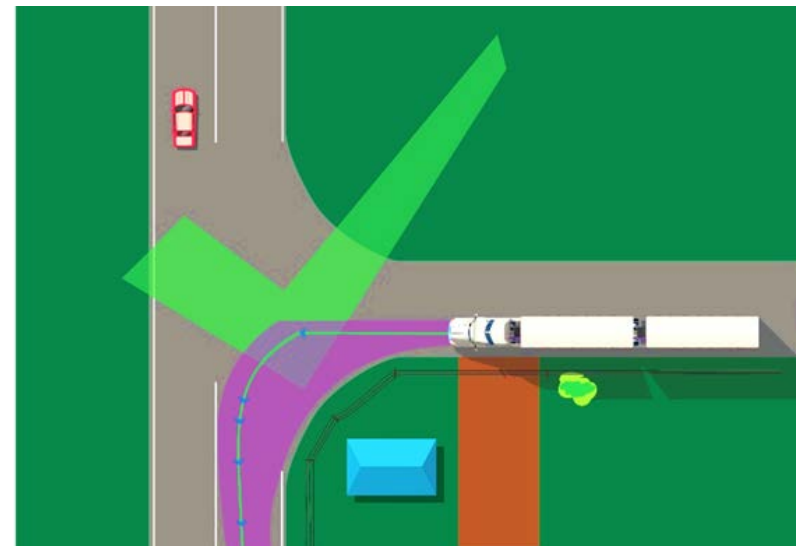
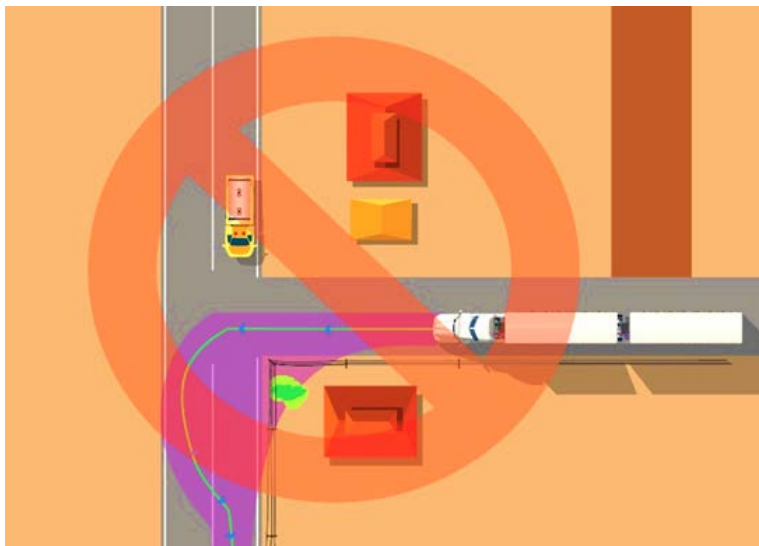
- 40km/h speed limit.
- An amber flashing warning light on the prime mover.
- No bridges to be crossed, unless an HMMS Bridge Crossing Permit is obtained.



Paddock to Bin Access Arrangements

The route must be checked to ensure:

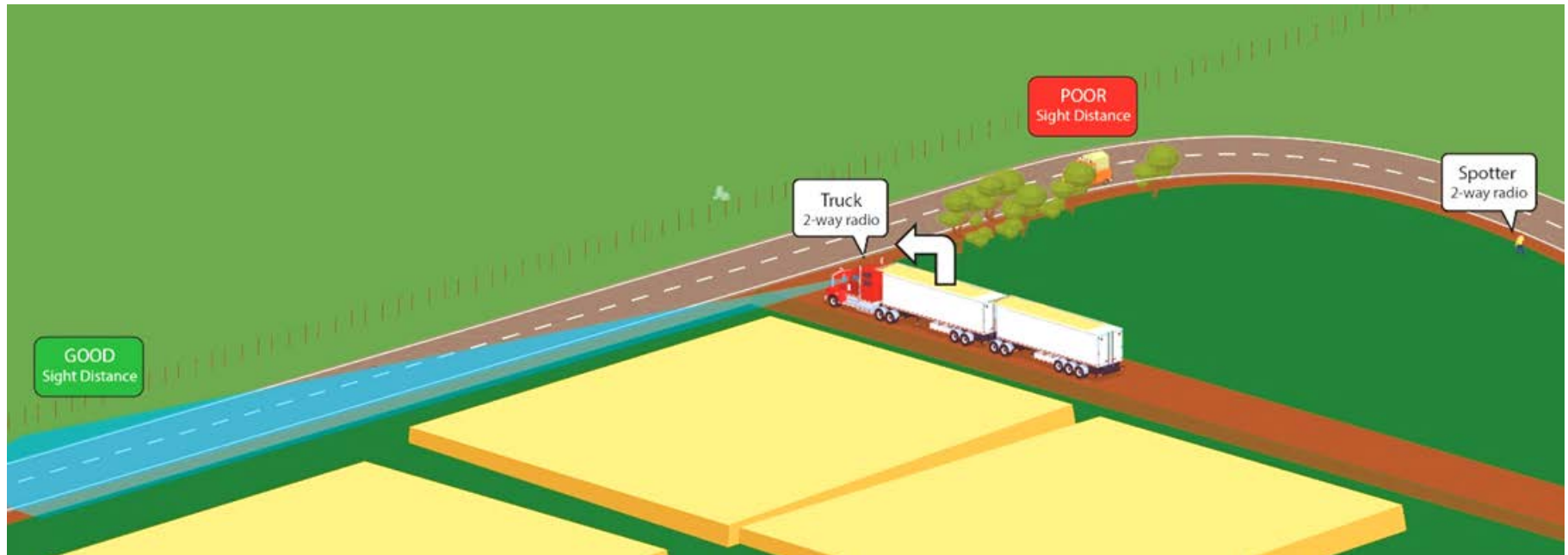
- The road is wide enough to enable the RAV to travel safely.
- The RAV can safely turn at intersections.



Paddock to Bin Access Arrangements

The route must be checked to ensure:

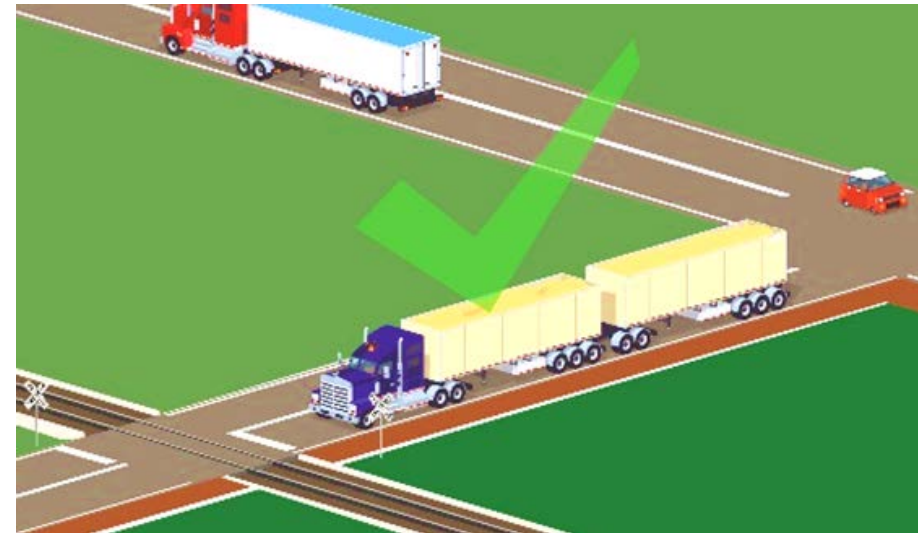
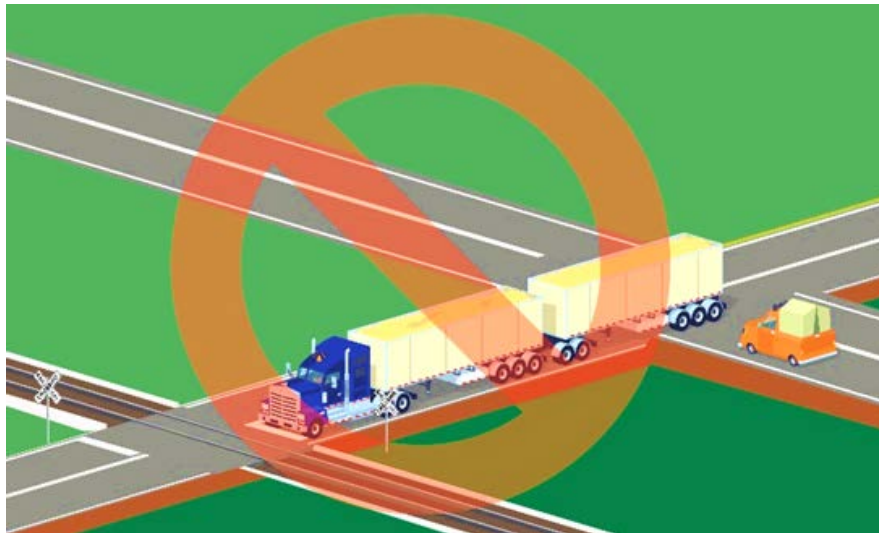
- There is sufficient sight distance at intersections to enable the RAV to safely complete the turning movement.



Paddock to Bin Access Arrangements

The route must be checked to ensure:

- There is sufficient stacking distance at all railway crossings.





mainroads
WESTERN AUSTRALIA

QUESTIONS

